

Touchless Sensor

ELE-1001-01-xx | ELE-2001-01-xx

BARIL

STYLE X FUNCTION

Impeccable Finishes

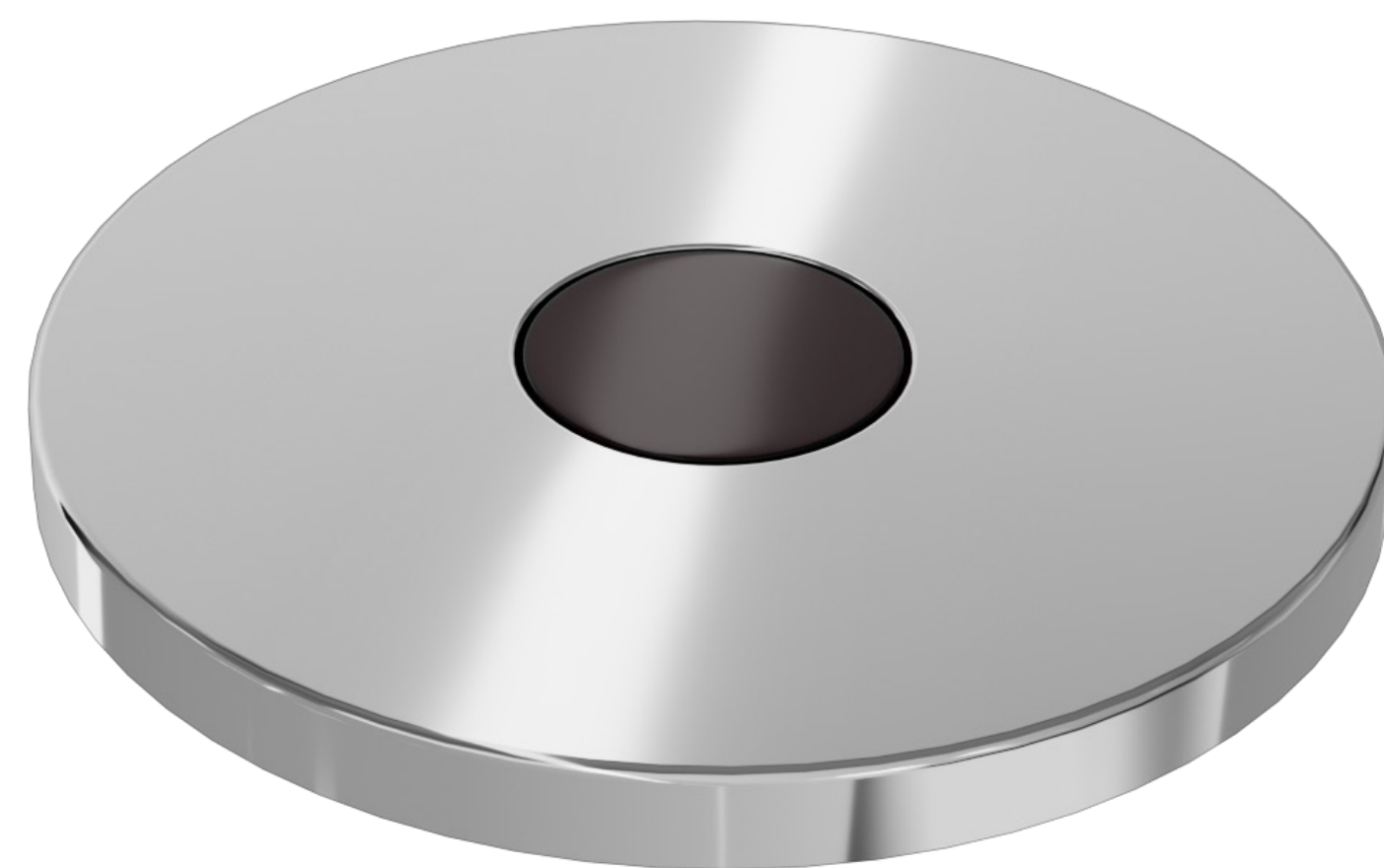
Available in any finish to match any style. See page 2.

Clean Look

Minimalist product that blends in perfectly with the decor, whether at home or in workspaces.

Fast and reliable response

Infrared technology with a calibratable distance between 50 and 250 mm avoids interferences and ensures a very high speed and reliability of response.



Instinctive Operation

Visible sensor and easy to understand and use ON/OFF mode.

European Components

High quality and reliable touchless solution, developed with a supplier/company specialized in this technology for 30 years.

Easy and Flexible Installation

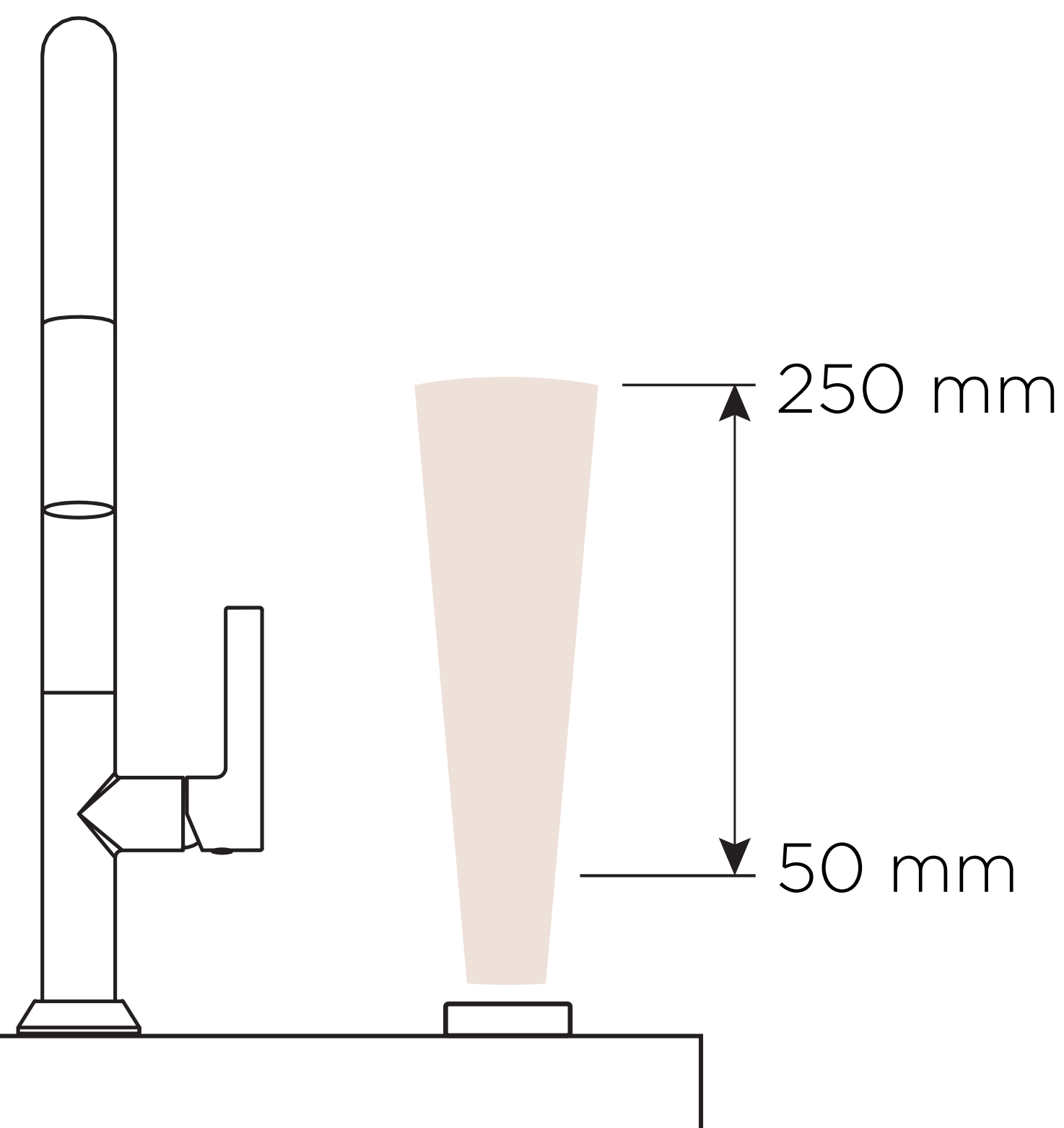
Installation kit included for both countertop and wall mounting. See page 2.

High Quality Materials

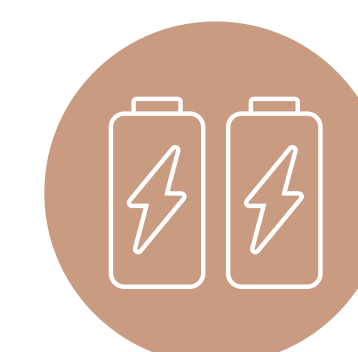
Solid brass construction, very strong and durable.



Calibratable Distance



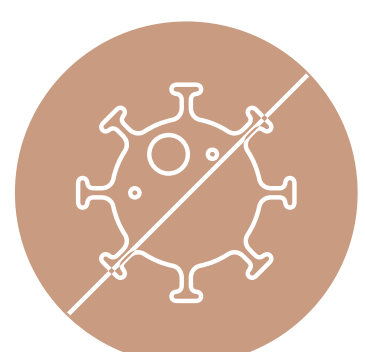
5-year
Warranty



Battery
Included



Compatible
with Every
BARIL Faucets



Hygienic

Touchless Sensor

ELE-1001-01-xx | ELE-2001-01-xx

BARIL

STYLE X FUNCTION

Two versions are available to fit all types of kitchen and bathroom faucets. Two installation options allow you to choose its location (countertop or wall-mounted).

Countertop Installation



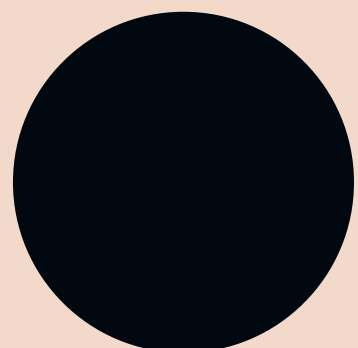
Wall-mounted Installation



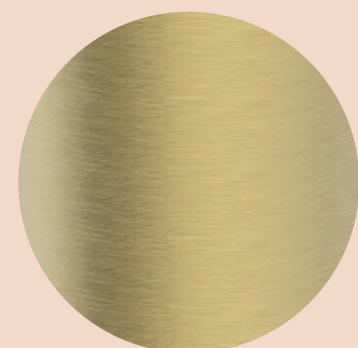
Available in All Solid Finishes



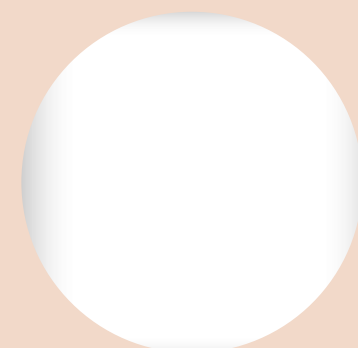
Chrome
(CC)



Matte
Black (KK)



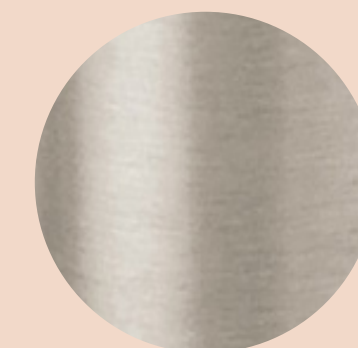
Satin
Brass (LL)



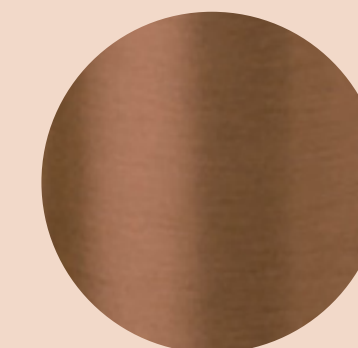
White
(BB)



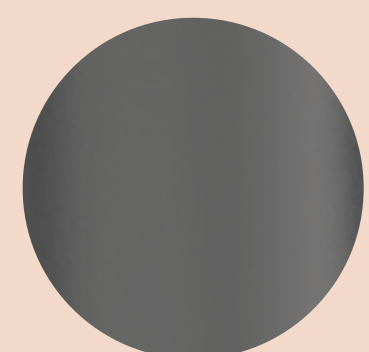
Polished
Nickel (YY)



Brushed
Nickel (NN)



Satin
Copper (VV)



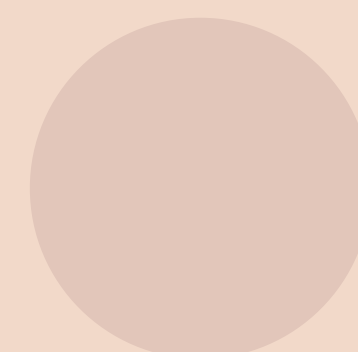
Black
Titanium (KM)



Venetian
Bronze (TT)



Gold
(GG)



Blush
(H)



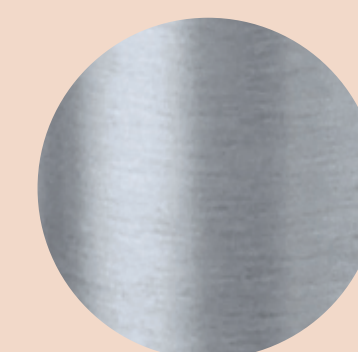
Mist
(I / II)



Glossy
Black (E)



French Gold
(J / JJ)



Stainless
Steel (SS)